

Route 292

Updated: December 2011

1969 Legislature:

Added to the State System by the **1969 Legislature**.

1969 Description: At Utah Technical College
From SR-68 at 4600 South Redwood Road westerly.

1971 Description: At Utah Technical College.
From SR-68 at 4600 South Redwood Road westerly 0.34 miles; thence northerly to 4520 South; thence east to Route 68 and the roadway paralleling Route 68 on the west between 4600 South and 4520 South.

Approved by the 1973 Legislature:

* (A)

1981 Legislature:

Route 292 extended from 4520 South to 2200 West.

1981 Description:
From Route 68 at 4600 South Redwood Road westerly 0.34 mile; thence northerly to 4520 South; thence east to Route 68 and the roadway paralleling Route 68 on the west between 4600 South and from a point on Route 292 west coincident with 4520 South to 2200 West.

1983 Legislature: Description remains the same.

1985 Legislature: Description remains the same.

1986 Legislature: Description remains the same.

1987 Legislature: Description remains the same.

1988 Legislature: Description remains the same.

1990 Legislature: Description remains the same.

*(B) Commission Action January 17, 1991:

Deleted a portion of leg "A" from the junction with leg "B" to the junction with leg "C". *Added* Leg "D" from 2200 West Street to Redwood Road (SR-68).

1991 Description:

Leg "A" From 2200 West easterly to a junction with leg "B", commencing again at a junction with leg "C" to Redwood Road (SR-68).

Leg "B" From a junction with Redwood Road (SR -68), westerly and northerly to a junction with leg "A".

Leg "C" From a junction with leg "B" northerly to a junction with leg "A".

Leg "D" From 2200 West easterly via Bruin Boulevard to a junction with Redwood Road (SR-68).

Route 292 Cont.

1992 Legislative Description:

- (a) From 2200 West Street easterly via 4520 South for 0.17 miles; commencing again at 0.47 mile easterly via 4520 South to Route 68.
- (b) From Route 68 westerly via 4600 South for 0.80 miles; thence northerly via 1900 West to 4520 South.
- (c) From 4600 South northerly paralleling Route 68 to 4520 South.
- (d) From 2200 West easterly via Bruin Boulevard to Route 68.

1993 Legislature: Description remains the same.

1994 Legislature: Description remains the same.

1995 Legislature: Description remains the same.

1996 Legislature: Description remains the same.

1997 Legislature: Description remains the same.

1998 Legislature: Description remains the same.

1999 Legislature: Description remains the same.

2000 Legislature: Description remains the same.

2001 Legislature: Description remains the same.

2002 Legislature: Description remains the same.

2003 Legislature: Description remains the same.

2004 Legislature: Description remains the same.

2005 Legislature: Description remains the same.

2006 Legislature: Description remains the same.

2007 Legislature: Description remains the same.

2008 Legislature: Description remains the same.

2011 Legislature: Description remains the same.

* Refers to resolution index page following.

Route 292

COUNTY/VOLUME & RESOLUTION NUMBER

A. Salt Lake Co. 6/28

B. Salt Lake Co. 9/1

DESCRIPTION OF RESOLUTION CHANGE

- | | |
|---------------------------------|--|
| (A). Extension - | From 2200 West via 4520 South to Existing SR-292. |
| (B). Deletion/Addition - | Deletion of a portion of Leg "A" and addition of Leg "D" from 2200 West to Redwood Road (SR-68). |

F-10

RESOLUTION
Addition to SR-292

WHEREAS, section 27-12-17 of the Utah State Code, annotated 1953, as amended, authorizes the Commission "to build and maintain roads leading to roads and parking spaces on the grounds of State institutions....", and

WHEREAS, the Utah Technical College has requested that 4520 South Street from 2200 West Street to the existing SR-292, a distance of 0.19 mile, be added to the State Highway System as an extension of SR-292, and

WHEREAS, the District 2 Director agrees with the request and the State-wide Planning Section verifies that the highway meets the requirements for the State System.

NOW, THEREFORE, be it resolved that SR-292 be extended along 4520 South Street to 2200 West Street, thereby increasing the State System mileage by 0.19 mile, and

Be it resolved that the accompanying map be submitted as a part of this resolution.

Dated this 22nd day of February, 1980

UTAH TRANSPORTATION COMMISSION

B. L. Starn Cox
Chairman

Wayne J. Hunter
Vice-Chairman

Clayton A. Church
Commissioner

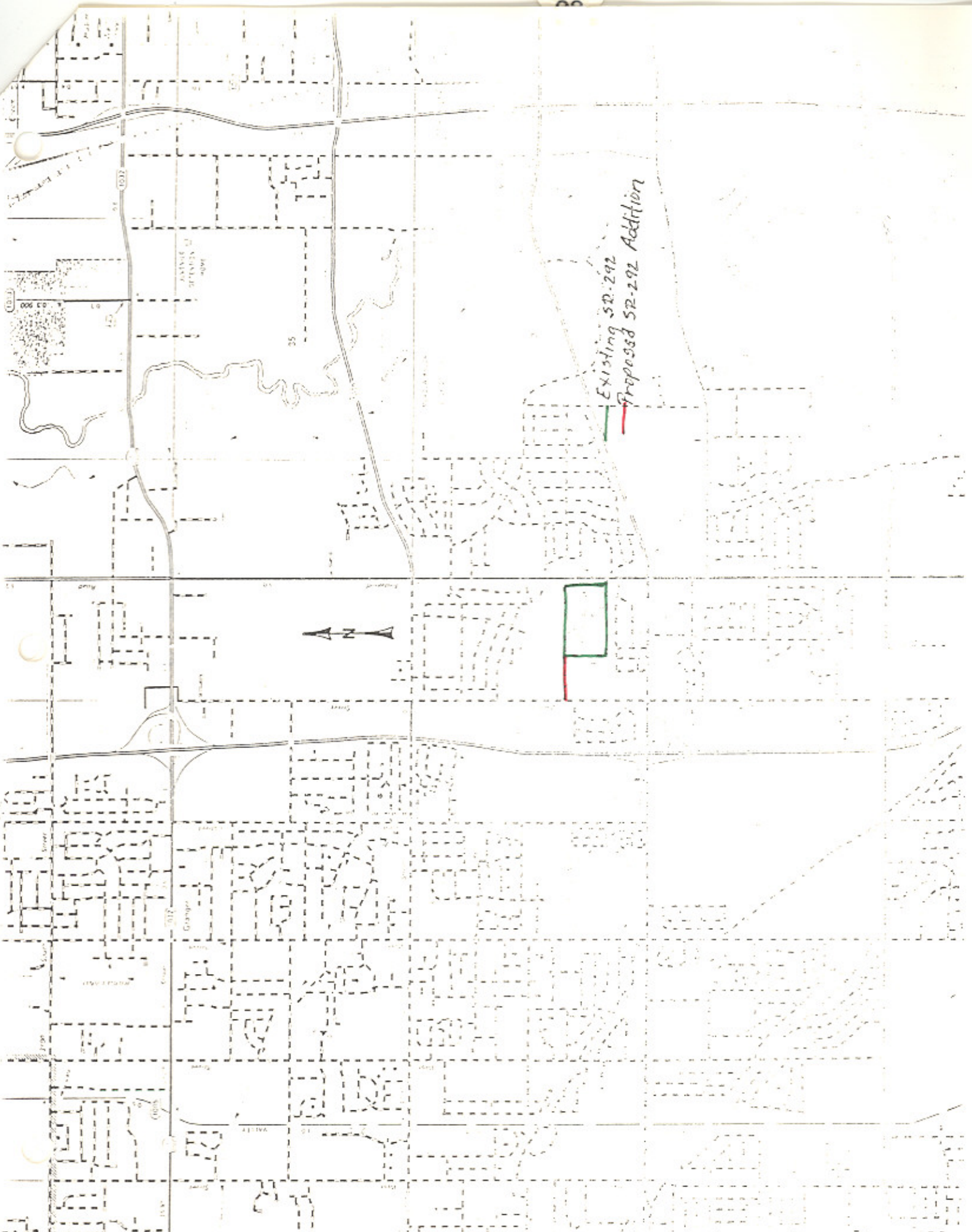
Samuel J. Doyle
Commissioner

ATTEST:

Israel A. Ferrelly
Secretary

Commissioner

SR-292
SL CO



Existing SR-292
Proposed SR-292 Addition

01-272
S.L.Co

UTAH DEPARTMENT OF TRANSPORTATION

bc: Howard B. Leatham, Engineer for Planning & Programming
Blaine J. Kay, District #2 Director
William E. Dunn, Chairman, Salt Lake County Commission
Don Spencer, Director, Salt Lake County Department of Highways

Jerry Fenn
Darrus Middleton
Gene Findlay
Robert Wheadon
Keith Rosevear

W. J. Stephenson
J. Q. Adair
James Naegle
Robin Hood
Art Guerts

Martin Cutler
Ray Behling
Bonnie Garcia
Mark Musuris
Ken Riddle

Richard Julio
E. E. Lovelace
Don Jensen
Clarence Bywater

March 13, 1980

C

O

Mr. Dale S. Cowgill, President
Utah Technical College
4600 South Redwood Road
Salt Lake City, Utah 84107

P

Dear President Cowgill:

Subject: Addition to SR-292 at Utah Technical College

Effective February 22, 1980, the Utah Department of Transportation approved the addition of 0.19 mile along 4520 South Street to 2200 West Street as a part of State Route 292.

Y

Enclosed is a copy of the resolution and a location map.

Very truly yours,

L. R. Jester, P.E.
Engineer for Transportation Planning

Enclosure

WDM:RDent:bt

SR-292
SL Community College

(1)

RESOLUTION

Transfer Portion of SR-292 within
the boundary of Salt Lake Community College

Whereas, Section 27-12-27 of the Utah Code 1990 provides for the addition to or deletion from the State Highway System and

Whereas, the Salt Lake Community College has proposed an agreement with the Utah Department of Transportation concerning transfer of a portion of SR-292 to the jurisdiction of Salt Lake Community College in exchange for a newly constructed roadway residing between Redwood Road and 2200 West Street known as Bruin Boulevard and

Whereas, the District 2 Director has concurred with the statements incorporated within stated agreement and

Whereas, the appropriate staff of the Transportation Planning Division has reviewed aforementioned agreement statements and concurs with the intended transfers.

NOW THEREFORE, be it resolved as follows:

1. A portion of SR-292 (Leg "A"), from a junction right with Leg "B" of SR-292, easterly to a junction right with Leg "C" SR-292 a distance of 0.30± miles be deleted from the State System of Highways and placed under the jurisdiction of the Salt Lake Community College.

2. The newly constructed roadway within the boundary of Salt Lake Community College known as Bruin Boulevard from 2200 West Street to Redwood Road, (SR-68) a distance of 0.51± miles be placed on the State System of Highways as a portion of SR-292 and designated as being Leg "D" of aforementioned State Route. The Functional Class will be local roadway and does not qualify to be placed on the Federal-aid System.

3. The aforementioned actions will increase the State Highway System a distance of 0.21± miles. The Functional Classification Local Road will increase a distance of 0.51± miles.

4. The accompanying letter, copy of proposed agreement and map be made part of this resolution.

Dated on this 17th day of January ¹⁹⁹¹ ~~1990~~

UTAH TRANSPORTATION COMMISSION

Samuel P. Boyd
Chairman

Wayne A. Winter
Vice-Chairman

Jack Weston
Commissioner

James L. Lakin
Commissioner

John D. Drey
Commissioner

Attest: David H. Anderson
Secretary



4600 South Redwood Road / P.O. Box 30808 / Salt Lake City, Utah 84130
(801) 967-4111

November 27, 1990

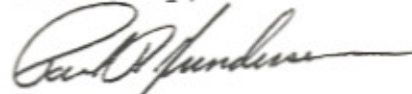
Gene Sturzenegger, P.E.
District Two Director
Utah Department of Transportation
2060 South 2400 West
Salt Lake City, Utah 84104

Dear Gene:

Enclosed are the three signed agreements for exchange and transfer between Salt Lake Community College and the Utah Department of Transportation.

We appreciate your prompt consideration of the college's request and look forward to working with you in the future.

Sincerely,



Paul R. Gundersen
Director of Facilities

PRG:ch

Enclosure

cc Bjorn Wang
Eugene Overson
Heber Hunt

A G R E E M E N T

In accordance with Sections 27-12-27, 27-12-28, 27-12-29 and 27-12-102 of the Utah Code Annotated 1953, as amended.

THIS AGREEMENT, made and entered into this _____ day of _____ 19_____, by and between the Utah Department of Transportation, hereinafter called the "Department", and the Authorized Officials of the Salt Lake Community College, hereinafter called "College".

WITNESSETH:

WHEREAS, College has completed the construction, within the boundary of College, of a road between Redwood Road and 2200 West Street known as Bruin Boulevard and further intends to modify the road system within College boundary according to an established master plan, and

WHEREAS, the College has petitioned Department to include the completed road as a portion of SR-292 and transfer a portion of the present SR-292 to the jurisdiction of College.

A plan has been prepared and is attached to and becomes a part of this agreement, showing the completed road and other portions of SR-292 within the boundary of College.

The plan is marked to show roads requiring a transfer of maintenance responsibility, and

NOW THEREFORE, it is agreed:

1. The Department, will make the changes in the maintenance responsibility of the roads of College in accordance with the attached plan, or as may hereafter be agreed between the parties hereto.

2. College agrees and consents to the transfer of the roads as shown by the special markings on the plan and the crossings of and the connections with College roads as shown on the plan.

3. The Department will retain control and maintenance of the roads which are adopted or recommended for adoption by the Department or by the Utah State Legislature as a part of the State Highway System and are so marked on the plan. College will assume control and maintenance of all other roads which are within its jurisdiction, and as marked on the plan upon notice from the Department. Notification will be given by the Department at the time maintenance responsibility is to be assumed by College.

4. This agreement may be modified at any time by the mutual consent of the parties hereto, as may become necessary in the public interest.

IN WITNESS WHEREOF, the parties hereto have caused this agreement to be executed by their duly authorized officers on the day and year listed above.

SALT LAKE COMMUNITY COLLEGE

UTAH DEPARTMENT OF TRANSPORTATION

By *Robert T. Hunt*
Interim President

Director Dept. of Transportation

ATTEST *Kathleen A. Bizzello*

ATTEST _____
Secretary



4600 South Redwood Road / P.O. Box 30808 / Salt Lake City, Utah 84130
(801) 967-4111

November 27, 1990

Gene Sturzenegger, P.E.
District Two Director
Utah Department of Transportation
2060 South 2400 West
Salt Lake City, Utah 84104

Dear Gene:

Enclosed are the three signed agreements for exchange and transfer between Salt Lake Community College and the Utah Department of Transportation.

We appreciate your prompt consideration of the college's request and look forward to working with you in the future.

Sincerely,

Paul R. Gundersen
Director of Facilities

PRG:ch

Enclosure

cc Bjorn Wang
Eugene Overson
Heber Hunt

Becomes SR-292

Leg "D"



Current SR-292
Jurisdictional Transfer
to SLCC

